

## Designer Info

*I started designing because I got tired of redesigning 6 to 7 inch bracelet patterns, making them longer and sometimes twice as wide as the original pattern.*

*My patterns are generally between 7 to 8 inches long & 1.5 to 2.25 inches wide. Of course you can make my patterns shorter, thinner, longer or wider because they are usually repeat patterns or use size 15s to create a smaller bracelet with a much more intricate design.*

*I hope you find my patterns interesting and stimulating, as I love to dabble in geometric, abstract, repeat patterns and tessellations. You will have conversational pieces of art when you wear my designs.*

*I don't suggest any dyed or galvanized beads in the palettes because they fade and the color rubs off with time. I also don't recommend using satin beads because they tend to cut thread and because they are thinner than other Delica beads, they break easily. It would be a shame to put money, time and effort into your piece only to have the color change, the thread cut or the beads break.*

*I want your beadwork to last forever.*

*Later and Love,*

*Lesha McPhearson aka Beadholden*

*beadholden@msn.com*

*Bead Well \* Bead Much \* Bead Often*

*-:/:-  
·'....)) -:/:-  
s·'....)) -:/:-  
((s·'....))  
-:/:- ((s·'  
-:/:-*

*Lesha McPhearson - Beadholden Designs*

*© Copyright, All Rights Reserved*

## Introduction

*Size in inches: 2.2 x 8 or desired dimensions, using size 11 Miyuki Delicas 6 colors. This design will stitch up quickly using the 2 drop method of the peyote stitch.*

*Patterns can be used to make: cuff bracelet, earrings, pendant, choker, sun catcher, panel, wall hanging, appliqué, coaster, place mat, belt, guitar strap, hatband, bookmark, pouch, amulet bag, eye glass case, cosmetic bag, change purse, business card case, credit card holder, checkbook cover, key chain, fan pull, napkin rings, etc. by reducing or enlarging the pattern accordingly.*

*The colors are only suggestions, but please remember to avoid satin, dyed and galvanized beads, so you won't be disappointed later. The P, R or PR after the Delica's Mfg Code represents whether the bead (P)ops or comes forward or (R)ecedes. PR indicates that the bead can pop or recede depending on the type of bead finish it is next to. Keep this in mind if you change my suggested colors.*

*Enjoy and come back soon.*

*\*Bead as if you were to die tomorrow.  
Live as if you were to bead forever.\**

*-:/:-  
·^~)) -:/:-  
s·' ·^~)) -:/:-  
((s·' s·' ·^~))  
-:/:- ((s·'  
-:/:-*

*Lesha McPhearson - Beadholden Designs  
© Copyright, All Rights Reserved*

## General Bead Instructions

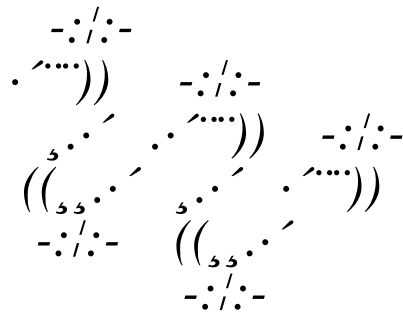
You can see more of my designs at [My BeadCoop Store](https://www.thebeadcoop.com/PatternDatabase/SearchPatterns.asp?txtSub=YES&lstCategories=0&lstStitches=0&lstDesigners=4277)  
<[https://www.thebeadcoop.com/  
PatternDatabase/SearchPatterns.asp?txtSub=  
YES&lstCategories=0&lstStitches=  
0&lstDesigners=4277](https://www.thebeadcoop.com/PatternDatabase/SearchPatterns.asp?txtSub=YES&lstCategories=0&lstStitches=0&lstDesigners=4277)>

While you are there, be sure to get my free patterns and free delica "Safe Bead" list that I have compiled. All these beads are durable - they will not break easily, fade, rub off or cut the thread. I also let you know the finish of each bead and whether it pops or recedes in designs.

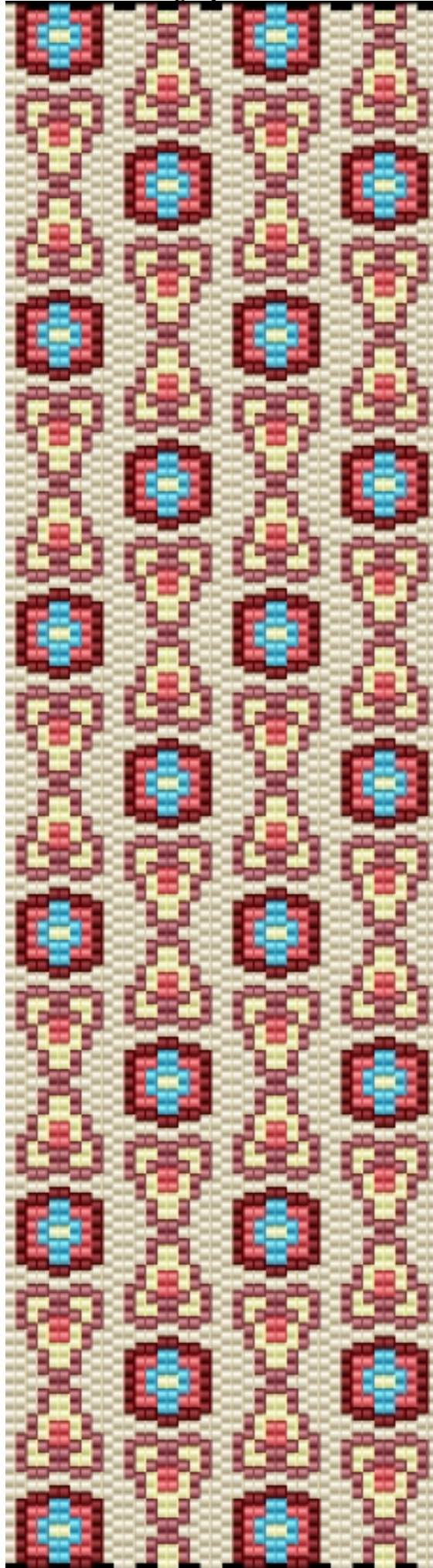
Later and Love,

Lesha aka Beadholden  
beadholden@msn.com


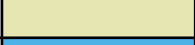



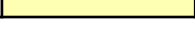
\*May you bead as long as you want,  
And never want as long as you bead.\*



*FIESTA 2 DROP PEYOTE*  
*Image preview.*



## *FIESTA 2 DROP PEYOTE Bead Color List*

<i>Color index</i>	<i>Color</i>	<i>Mfg code</i>	<i>Nick name</i>	<i>Bead count</i>	<i>Symbol</i>
23		0075-P	Orange CoralDkLndCry, Tr SLAB	424	☼
171		0762-R	White Cream Dk, Opaque Matte	1964	☽
277		1109-R	Turquoise Blue Ocean, Transparent	264	☾
290		1222-PR	Wine Cranberry Dk, Transparent Lust	1064	☿
312		1262-R	Wine Cranberry Dark, Transp Matte	468	♁
389		1521-R	Yellow Pale, Opaque Matte AB	616	♂









## FIESTA 2 DROP PEYOTE

*2-Peyote word chart(original): rows left to right reverse as mfg name*

Row	Direction	Word Chart
1	left to right	1(0762-R) 1(0075-P) 1(1109-R) 1(0075-P) 1(1262-R) 2(0762-R) 1(1521-R) 1(1222-PR) 2(0762-R) 1(0075-P) 1(1109-R) 1(0075-P) 1(1262-R) 2(0762-R) 1(1521-R) 1(1222-PR) 1(0762-R)
2	right to left	2(0762-R) 1(1521-R) 1(1222-PR) 2(0762-R) 1(0075-P) 1(1109-R) 1(0075-P) 1(1262-R) 2(0762-R) 1(1521-R) 1(1222-PR) 2(0762-R) 1(0075-P) 1(1109-R) 1(0075-P) 1(1262-R)
3	left to right	1(0762-R) 1(0075-P) 2(1109-R) 1(1262-R) 2(0762-R) 2(1222-PR) 2(0762-R) 1(0075-P) 2(1109-R) 1(1262-R) 2(0762-R) 2(1222-PR) 1(0762-R)
4	right to left	2(0762-R) 2(1222-PR) 2(0762-R) 1(0075-P) 2(1109-R) 1(1262-R) 2(0762-R) 2(1222-PR) 2(0762-R) 1(0075-P) 2(1109-R) 1(1262-R)
5	left to right	1(0762-R) 1(0075-P) 1(1521-R) 1(1109-R) 1(1262-R) 2(0762-R) 1(1222-PR) 3(0762-R) 1(0075-P) 1(1521-R) 1(1109-R) 1(1262-R) 2(0762-R) 1(1222-PR) 2(0762-R)
6	right to left	2(0762-R) 1(1222-PR) 3(0762-R) 1(0075-P) 1(1521-R) 1(1109-R) 1(1262-R) 2(0762-R) 1(1222-PR) 3(0762-R) 1(0075-P) 1(1521-R) 1(1109-R) 1(1262-R)
7	left to right	1(0762-R) 1(0075-P) 1(1109-R) 1(0075-P) 1(1262-R) 2(0762-R) 1(1521-R) 1(1222-PR) 2(0762-R) 1(0075-P) 1(1109-R) 1(0075-P) 1(1262-R) 2(0762-R) 1(1521-R) 1(1222-PR) 1(0762-R)
8	right to left	2(0762-R) 1(1521-R) 1(1222-PR) 2(0762-R) 1(0075-P) 1(1109-R) 1(0075-P) 1(1262-R) 2(0762-R) 1(1521-R) 1(1222-PR) 2(0762-R) 1(0075-P) 1(1109-R) 1(0075-P) 1(1262-R)
9	left to right	1(0762-R) 1(1262-R) 1(1109-R) 2(1262-R) 2(0762-R) 1(1521-R) 1(1222-PR) 2(0762-R) 1(1262-R) 1(1109-R) 2(1262-R) 2(0762-R) 1(1521-R) 1(1222-PR) 1(0762-R)
10	right to left	2(0762-R) 1(1521-R) 1(1222-PR) 2(0762-R) 1(1262-R) 1(1109-R) 2(1262-R) 2(0762-R) 1(1521-R) 1(1222-PR) 2(0762-R) 1(1262-R) 1(1109-R) 2(1262-R)
11	left to right	2(0762-R) 1(1262-R) 3(0762-R) 1(1222-PR) 1(0075-P) 1(1521-R) 3(0762-R) 1(1262-R) 3(0762-R) 1(1222-PR) 1(0075-P) 1(1521-R) 1(0762-R)
12	right to left	1(0762-R) 1(1222-PR) 1(0075-P) 1(1521-R) 3(0762-R) 1(1262-R) 3(0762-R) 1(1222-PR) 1(0075-P) 1(1521-R) 3(0762-R) 1(1262-R) 2(0762-R)
13	left to right	1(0762-R) 1(1222-PR) 1(0762-R) 1(1222-PR) 2(0762-R) 1(1222-PR) 1(0075-P) 1(1521-R) 1(1222-PR) 1(0762-R) 1(1222-PR) 1(0762-R) 1(1222-PR) 2(0762-R) 1(1222-PR) 1(0075-P) 1(1521-R) 1(1222-PR)
14	right to left	1(0762-R) 1(1222-PR) 1(0075-P) 1(1521-R) 1(1222-PR) 1(0762-R) 1(1222-PR) 1(0762-R) 1(1222-PR) 2(0762-R) 1(1222-PR) 1(0075-P) 1(1521-R) 1(1222-PR) 1(0762-R) 1(1222-PR) 1(0762-R) 1(1222-PR) 1(0762-R)
15	left to right	1(0762-R) 1(1521-R) 1(1222-PR) 1(1521-R) 1(1222-PR) 1(0762-R) 1(1521-R) 3(1222-PR) 1(0762-R) 1(1521-R) 1(1222-PR) 1(1521-R) 1(1222-PR) 1(0762-R) 1(1521-R) 3(1222-PR)
16	right to left	1(0762-R) 1(1521-R) 3(1222-PR) 1(0762-R) 1(1521-R) 1(1222-PR) 1(1521-R) 1(1222-PR) 1(0762-R) 1(1521-R) 3(1222-PR) 1(0762-R) 1(1521-R) 1(1222-PR) 1(1521-R) 1(1222-PR)
17	left to right	1(0762-R) 1(1521-R) 3(1222-PR) 1(0762-R) 1(1521-R) 1(1222-PR) 1(1521-R) 1(1222-PR) 1(0762-R) 1(1521-R) 3(1222-PR) 1(0762-R) 1(1521-R) 1(1222-PR) 1(1521-R) 1(1222-PR)
18	right to left	1(0762-R) 1(1521-R) 1(1222-PR) 1(1521-R) 1(1222-PR) 1(0762-R) 1(1521-R) 3(1222-PR) 1(0762-R) 1(1521-R) 1(1222-PR) 1(1521-R) 1(1222-PR) 1(0762-R) 1(1521-R) 3(1222-PR)
19	left to right	1(0762-R) 1(1222-PR) 1(0075-P) 1(1521-R) 1(1222-PR) 1(0762-R) 1(1222-PR) 1(0762-R) 1(1222-PR) 2(0762-R) 1(1222-PR) 1(0075-P) 1(1521-R) 1(1222-PR) 1(0762-R) 1(1222-PR) 1(0762-R) 1(1222-PR) 1(0762-R)
20	right to left	1(0762-R) 1(1222-PR) 1(0762-R) 1(1222-PR) 2(0762-R) 1(1222-PR) 1(0075-P) 1(1521-R) 1(1222-PR) 1(0762-R) 1(1222-PR) 1(0762-R) 1(1222-PR) 2(0762-R) 1(1222-PR) 1(0075-P) 1(1521-R) 1(1222-PR)

## FIESTA 2 DROP PEYOTE

*2-Peyote word chart(original): rows left to right reverse as mfg name*

Row	Direction	Word Chart
21	left to right	1(0762-R) 1(1222-PR) 1(0075-P) 1(1521-R) 3(0762-R) 1(1262-R) 3(0762-R) 1(1222-PR) 1(0075-P) 1(1521-R) 3(0762-R) 1(1262-R) 2(0762-R)
22	right to left	2(0762-R) 1(1262-R) 3(0762-R) 1(1222-PR) 1(0075-P) 1(1521-R) 3(0762-R) 1(1262-R) 3(0762-R) 1(1222-PR) 1(0075-P) 1(1521-R) 1(0762-R)
23	left to right	2(0762-R) 1(1521-R) 1(1222-PR) 2(0762-R) 1(1262-R) 1(1109-R) 2(1262-R) 2(0762-R) 1(1521-R) 1(1222-PR) 2(0762-R) 1(1262-R) 1(1109-R) 2(1262-R)
24	right to left	1(0762-R) 1(1262-R) 1(1109-R) 2(1262-R) 2(0762-R) 1(1521-R) 1(1222-PR) 2(0762-R) 1(1262-R) 1(1109-R) 2(1262-R) 2(0762-R) 1(1521-R) 1(1222-PR) 1(0762-R)
25	left to right	2(0762-R) 1(1521-R) 1(1222-PR) 2(0762-R) 1(0075-P) 1(1109-R) 1(0075-P) 1(1262-R) 2(0762-R) 1(1521-R) 1(1222-PR) 2(0762-R) 1(0075-P) 1(1109-R) 1(0075-P) 1(1262-R)
26	right to left	1(0762-R) 1(0075-P) 1(1109-R) 1(0075-P) 1(1262-R) 2(0762-R) 1(1521-R) 1(1222-PR) 2(0762-R) 1(0075-P) 1(1109-R) 1(0075-P) 1(1262-R) 2(0762-R) 1(1521-R) 1(1222-PR) 1(0762-R)
27	left to right	2(0762-R) 1(1222-PR) 3(0762-R) 1(0075-P) 1(1521-R) 1(1109-R) 1(1262-R) 2(0762-R) 1(1222-PR) 3(0762-R) 1(0075-P) 1(1521-R) 1(1109-R) 1(1262-R)
28	right to left	1(0762-R) 1(0075-P) 1(1521-R) 1(1109-R) 1(1262-R) 2(0762-R) 1(1222-PR) 3(0762-R) 1(0075-P) 1(1521-R) 1(1109-R) 1(1262-R) 2(0762-R) 1(1222-PR) 2(0762-R)
29	left to right	2(0762-R) 2(1222-PR) 2(0762-R) 1(0075-P) 2(1109-R) 1(1262-R) 2(0762-R) 2(1222-PR) 2(0762-R) 1(0075-P) 2(1109-R) 1(1262-R)
30	right to left	1(0762-R) 1(0075-P) 2(1109-R) 1(1262-R) 2(0762-R) 2(1222-PR) 2(0762-R) 1(0075-P) 2(1109-R) 1(1262-R) 2(0762-R) 2(1222-PR) 1(0762-R)
31	left to right	2(0762-R) 1(1521-R) 1(1222-PR) 2(0762-R) 1(0075-P) 1(1109-R) 1(0075-P) 1(1262-R) 2(0762-R) 1(1521-R) 1(1222-PR) 2(0762-R) 1(0075-P) 1(1109-R) 1(0075-P) 1(1262-R)
32	right to left	1(0762-R) 1(0075-P) 1(1109-R) 1(0075-P) 1(1262-R) 2(0762-R) 1(1521-R) 1(1222-PR) 2(0762-R) 1(0075-P) 1(1109-R) 1(0075-P) 1(1262-R) 2(0762-R) 1(1521-R) 1(1222-PR) 1(0762-R)
33	left to right	1(0762-R) 1(1222-PR) 2(1521-R) 2(0762-R) 3(1262-R) 2(0762-R) 1(1222-PR) 2(1521-R) 2(0762-R) 3(1262-R) 1(0762-R)
34	right to left	1(0762-R) 3(1262-R) 2(0762-R) 1(1222-PR) 2(1521-R) 2(0762-R) 3(1262-R) 2(0762-R) 1(1222-PR) 2(1521-R) 1(0762-R)
35	left to right	1(0762-R) 1(1222-PR) 1(0075-P) 1(1521-R) 7(0762-R) 1(1222-PR) 1(0075-P) 1(1521-R) 6(0762-R)
36	right to left	6(0762-R) 1(1222-PR) 1(0075-P) 1(1521-R) 7(0762-R) 1(1222-PR) 1(0075-P) 1(1521-R) 1(0762-R)
37	left to right	1(0762-R) 1(1521-R) 1(0075-P) 2(1222-PR) 1(0762-R) 4(1222-PR) 1(0762-R) 1(1521-R) 1(0075-P) 2(1222-PR) 1(0762-R) 4(1222-PR)
38	right to left	1(0762-R) 4(1222-PR) 1(0762-R) 1(1521-R) 1(0075-P) 2(1222-PR) 1(0762-R) 4(1222-PR) 1(0762-R) 1(1521-R) 1(0075-P) 2(1222-PR)
39	left to right	1(0762-R) 1(1521-R) 1(1222-PR) 1(1521-R) 1(1222-PR) 1(0762-R) 1(1521-R) 1(1222-PR) 1(1521-R) 1(1222-PR) 1(0762-R) 1(1521-R) 1(1222-PR) 1(1521-R) 1(1222-PR)
40	right to left	1(0762-R) 1(1521-R) 1(1222-PR) 1(1521-R) 1(1222-PR) 1(0762-R) 1(1521-R) 1(1222-PR) 1(1521-R) 1(1222-PR) 1(0762-R) 1(1521-R) 1(1222-PR) 1(1521-R) 1(1222-PR)
41	left to right	1(0762-R) 4(1222-PR) 1(0762-R) 1(1521-R) 1(0075-P) 2(1222-PR) 1(0762-R) 4(1222-PR) 1(0762-R) 1(1521-R) 1(0075-P) 2(1222-PR)

## FIESTA 2 DROP PEYOTE

*2-Peyote word chart(original): rows left to right reverse as mfg name*

Row	Direction	Word Chart
42	right to left	1(0762-R) 1(1521-R) 1(0075-P) 2(1222-PR) 1(0762-R) 4(1222-PR) 1(0762-R) 1(1521-R) 1(0075-P) 2(1222-PR) 1(0762-R) 4(1222-PR)
43	left to right	6(0762-R) 1(1222-PR) 1(0075-P) 1(1521-R) 7(0762-R) 1(1222-PR) 1(0075-P) 1(1521-R) 1(0762-R)
44	right to left	1(0762-R) 1(1222-PR) 1(0075-P) 1(1521-R) 7(0762-R) 1(1222-PR) 1(0075-P) 1(1521-R) 6(0762-R)
45	left to right	1(0762-R) 3(1262-R) 2(0762-R) 1(1222-PR) 2(1521-R) 2(0762-R) 3(1262-R) 2(0762-R) 1(1222-PR) 2(1521-R) 1(0762-R)
46	right to left	1(0762-R) 1(1222-PR) 2(1521-R) 2(0762-R) 3(1262-R) 2(0762-R) 1(1222-PR) 2(1521-R) 2(0762-R) 3(1262-R) 1(0762-R)
47	left to right	1(0762-R) 1(0075-P) 1(1109-R) 1(0075-P) 1(1262-R) 2(0762-R) 1(1521-R) 1(1222-PR) 2(0762-R) 1(0075-P) 1(1109-R) 1(0075-P) 1(1262-R) 2(0762-R) 1(1521-R) 1(1222-PR) 1(0762-R)
48	right to left	2(0762-R) 1(1521-R) 1(1222-PR) 2(0762-R) 1(0075-P) 1(1109-R) 1(0075-P) 1(1262-R) 2(0762-R) 1(1521-R) 1(1222-PR) 2(0762-R) 1(0075-P) 1(1109-R) 1(0075-P) 1(1262-R)
49	left to right	1(0762-R) 1(0075-P) 2(1109-R) 1(1262-R) 2(0762-R) 2(1222-PR) 2(0762-R) 1(0075-P) 2(1109-R) 1(1262-R) 2(0762-R) 2(1222-PR) 1(0762-R)
50	right to left	2(0762-R) 2(1222-PR) 2(0762-R) 1(0075-P) 2(1109-R) 1(1262-R) 2(0762-R) 2(1222-PR) 2(0762-R) 1(0075-P) 2(1109-R) 1(1262-R)
51	left to right	1(0762-R) 1(0075-P) 1(1521-R) 1(1109-R) 1(1262-R) 2(0762-R) 1(1222-PR) 3(0762-R) 1(0075-P) 1(1521-R) 1(1109-R) 1(1262-R) 2(0762-R) 1(1222-PR) 2(0762-R)
52	right to left	2(0762-R) 1(1222-PR) 3(0762-R) 1(0075-P) 1(1521-R) 1(1109-R) 1(1262-R) 2(0762-R) 1(1222-PR) 3(0762-R) 1(0075-P) 1(1521-R) 1(1109-R) 1(1262-R)
53	left to right	1(0762-R) 1(0075-P) 1(1109-R) 1(0075-P) 1(1262-R) 2(0762-R) 1(1521-R) 1(1222-PR) 2(0762-R) 1(0075-P) 1(1109-R) 1(0075-P) 1(1262-R) 2(0762-R) 1(1521-R) 1(1222-PR) 1(0762-R)
54	right to left	2(0762-R) 1(1521-R) 1(1222-PR) 2(0762-R) 1(0075-P) 1(1109-R) 1(0075-P) 1(1262-R) 2(0762-R) 1(1521-R) 1(1222-PR) 2(0762-R) 1(0075-P) 1(1109-R) 1(0075-P) 1(1262-R)
55	left to right	1(0762-R) 1(1262-R) 1(1109-R) 2(1262-R) 2(0762-R) 1(1521-R) 1(1222-PR) 2(0762-R) 1(1262-R) 1(1109-R) 2(1262-R) 2(0762-R) 1(1521-R) 1(1222-PR) 1(0762-R)
56	right to left	2(0762-R) 1(1521-R) 1(1222-PR) 2(0762-R) 1(1262-R) 1(1109-R) 2(1262-R) 2(0762-R) 1(1521-R) 1(1222-PR) 2(0762-R) 1(1262-R) 1(1109-R) 2(1262-R)
57	left to right	2(0762-R) 1(1262-R) 3(0762-R) 1(1222-PR) 1(0075-P) 1(1521-R) 3(0762-R) 1(1262-R) 3(0762-R) 1(1222-PR) 1(0075-P) 1(1521-R) 1(0762-R)
58	right to left	1(0762-R) 1(1222-PR) 1(0075-P) 1(1521-R) 3(0762-R) 1(1262-R) 3(0762-R) 1(1222-PR) 1(0075-P) 1(1521-R) 3(0762-R) 1(1262-R) 2(0762-R)
59	left to right	1(0762-R) 1(1222-PR) 1(0762-R) 1(1222-PR) 2(0762-R) 1(1222-PR) 1(0075-P) 1(1521-R) 1(1222-PR) 1(0762-R) 1(1222-PR) 1(0762-R) 1(1222-PR) 2(0762-R) 1(1222-PR) 1(0075-P) 1(1521-R) 1(1222-PR)
60	right to left	1(0762-R) 1(1222-PR) 1(0075-P) 1(1521-R) 1(1222-PR) 1(0762-R) 1(1222-PR) 1(0762-R) 1(1222-PR) 2(0762-R) 1(1222-PR) 1(0075-P) 1(1521-R) 1(1222-PR) 1(0762-R) 1(1222-PR) 1(0762-R) 1(1222-PR) 1(0762-R)
61	left to right	1(0762-R) 1(1521-R) 1(1222-PR) 1(1521-R) 1(1222-PR) 1(0762-R) 1(1521-R) 3(1222-PR) 1(0762-R) 1(1521-R) 1(1222-PR) 1(1521-R) 1(1222-PR) 1(0762-R) 1(1521-R) 3(1222-PR)
62	right to left	1(0762-R) 1(1521-R) 3(1222-PR) 1(0762-R) 1(1521-R) 1(1222-PR) 1(1521-R) 1(1222-PR) 1(0762-R) 1(1521-R) 3(1222-PR) 1(0762-R) 1(1521-R) 1(1222-PR) 1(1521-R) 1(1222-PR)

## FIESTA 2 DROP PEYOTE

*2-Peyote word chart(original): rows left to right reverse as mfg name*

Row	Direction	Word Chart
63	left to right	1(0762-R) 1(1521-R) 3(1222-PR) 1(0762-R) 1(1521-R) 1(1222-PR) 1(1521-R) 1(1222-PR) 1(0762-R) 1(1521-R) 3(1222-PR) 1(0762-R) 1(1521-R) 1(1222-PR) 1(1521-R) 1(1222-PR)
64	right to left	1(0762-R) 1(1521-R) 1(1222-PR) 1(1521-R) 1(1222-PR) 1(0762-R) 1(1521-R) 3(1222-PR) 1(0762-R) 1(1521-R) 1(1222-PR) 1(1521-R) 1(1222-PR) 1(0762-R) 1(1521-R) 3(1222-PR)
65	left to right	1(0762-R) 1(1222-PR) 1(0075-P) 1(1521-R) 1(1222-PR) 1(0762-R) 1(1222-PR) 1(0762-R) 1(1222-PR) 2(0762-R) 1(1222-PR) 1(0075-P) 1(1521-R) 1(1222-PR) 1(0762-R) 1(1222-PR) 1(0762-R) 1(1222-PR) 1(0762-R)
66	right to left	1(0762-R) 1(1222-PR) 1(0762-R) 1(1222-PR) 2(0762-R) 1(1222-PR) 1(0075-P) 1(1521-R) 1(1222-PR) 1(0762-R) 1(1222-PR) 1(0762-R) 1(1222-PR) 2(0762-R) 1(1222-PR) 1(0075-P) 1(1521-R) 1(1222-PR)
67	left to right	1(0762-R) 1(1222-PR) 1(0075-P) 1(1521-R) 3(0762-R) 1(1262-R) 3(0762-R) 1(1222-PR) 1(0075-P) 1(1521-R) 3(0762-R) 1(1262-R) 2(0762-R)
68	right to left	2(0762-R) 1(1262-R) 3(0762-R) 1(1222-PR) 1(0075-P) 1(1521-R) 3(0762-R) 1(1262-R) 3(0762-R) 1(1222-PR) 1(0075-P) 1(1521-R) 1(0762-R)
69	left to right	2(0762-R) 1(1521-R) 1(1222-PR) 2(0762-R) 1(1262-R) 1(1109-R) 2(1262-R) 2(0762-R) 1(1521-R) 1(1222-PR) 2(0762-R) 1(1262-R) 1(1109-R) 2(1262-R)
70	right to left	1(0762-R) 1(1262-R) 1(1109-R) 2(1262-R) 2(0762-R) 1(1521-R) 1(1222-PR) 2(0762-R) 1(1262-R) 1(1109-R) 2(1262-R) 2(0762-R) 1(1521-R) 1(1222-PR) 1(0762-R)
71	left to right	2(0762-R) 1(1521-R) 1(1222-PR) 2(0762-R) 1(0075-P) 1(1109-R) 1(0075-P) 1(1262-R) 2(0762-R) 1(1521-R) 1(1222-PR) 2(0762-R) 1(0075-P) 1(1109-R) 1(0075-P) 1(1262-R)
72	right to left	1(0762-R) 1(0075-P) 1(1109-R) 1(0075-P) 1(1262-R) 2(0762-R) 1(1521-R) 1(1222-PR) 2(0762-R) 1(0075-P) 1(1109-R) 1(0075-P) 1(1262-R) 2(0762-R) 1(1521-R) 1(1222-PR) 1(0762-R)
73	left to right	2(0762-R) 1(1222-PR) 3(0762-R) 1(0075-P) 1(1521-R) 1(1109-R) 1(1262-R) 2(0762-R) 1(1222-PR) 3(0762-R) 1(0075-P) 1(1521-R) 1(1109-R) 1(1262-R)
74	right to left	1(0762-R) 1(0075-P) 1(1521-R) 1(1109-R) 1(1262-R) 2(0762-R) 1(1222-PR) 3(0762-R) 1(0075-P) 1(1521-R) 1(1109-R) 1(1262-R) 2(0762-R) 1(1222-PR) 2(0762-R)
75	left to right	2(0762-R) 2(1222-PR) 2(0762-R) 1(0075-P) 2(1109-R) 1(1262-R) 2(0762-R) 2(1222-PR) 2(0762-R) 1(0075-P) 2(1109-R) 1(1262-R)
76	right to left	1(0762-R) 1(0075-P) 2(1109-R) 1(1262-R) 2(0762-R) 2(1222-PR) 2(0762-R) 1(0075-P) 2(1109-R) 1(1262-R) 2(0762-R) 2(1222-PR) 1(0762-R)
77	left to right	2(0762-R) 1(1521-R) 1(1222-PR) 2(0762-R) 1(0075-P) 1(1109-R) 1(0075-P) 1(1262-R) 2(0762-R) 1(1521-R) 1(1222-PR) 2(0762-R) 1(0075-P) 1(1109-R) 1(0075-P) 1(1262-R)
78	right to left	1(0762-R) 1(0075-P) 1(1109-R) 1(0075-P) 1(1262-R) 2(0762-R) 1(1521-R) 1(1222-PR) 2(0762-R) 1(0075-P) 1(1109-R) 1(0075-P) 1(1262-R) 2(0762-R) 1(1521-R) 1(1222-PR) 1(0762-R)
79	left to right	1(0762-R) 1(1222-PR) 2(1521-R) 2(0762-R) 3(1262-R) 2(0762-R) 1(1222-PR) 2(1521-R) 2(0762-R) 3(1262-R) 1(0762-R)
80	right to left	1(0762-R) 3(1262-R) 2(0762-R) 1(1222-PR) 2(1521-R) 2(0762-R) 3(1262-R) 2(0762-R) 1(1222-PR) 2(1521-R) 1(0762-R)
81	left to right	1(0762-R) 1(1222-PR) 1(0075-P) 1(1521-R) 7(0762-R) 1(1222-PR) 1(0075-P) 1(1521-R) 6(0762-R)
82	right to left	6(0762-R) 1(1222-PR) 1(0075-P) 1(1521-R) 7(0762-R) 1(1222-PR) 1(0075-P) 1(1521-R) 1(0762-R)
83	left to right	1(0762-R) 1(1521-R) 1(0075-P) 2(1222-PR) 1(0762-R) 4(1222-PR) 1(0762-R) 1(1521-R) 1(0075-P) 2(1222-PR) 1(0762-R) 4(1222-PR)

## FIESTA 2 DROP PEYOTE

*2-Peyote word chart(original): rows left to right reverse as mfg name*

Row	Direction	Word Chart
84	right to left	1(0762-R) 4(1222-PR) 1(0762-R) 1(1521-R) 1(0075-P) 2(1222-PR) 1(0762-R) 4(1222-PR) 1(0762-R) 1(1521-R) 1(0075-P) 2(1222-PR)
85	left to right	1(0762-R) 1(1521-R) 1(1222-PR) 1(1521-R) 1(1222-PR) 1(0762-R) 1(1521-R) 1(1222-PR) 1(1521-R) 1(1222-PR) 1(0762-R) 1(1521-R) 1(1222-PR) 1(1521-R) 1(1222-PR)
86	right to left	1(0762-R) 1(1521-R) 1(1222-PR) 1(1521-R) 1(1222-PR) 1(0762-R) 1(1521-R) 1(1222-PR) 1(1521-R) 1(1222-PR) 1(0762-R) 1(1521-R) 1(1222-PR) 1(1521-R) 1(1222-PR)
87	left to right	1(0762-R) 4(1222-PR) 1(0762-R) 1(1521-R) 1(0075-P) 2(1222-PR) 1(0762-R) 4(1222-PR) 1(0762-R) 1(1521-R) 1(0075-P) 2(1222-PR)
88	right to left	1(0762-R) 1(1521-R) 1(0075-P) 2(1222-PR) 1(0762-R) 4(1222-PR) 1(0762-R) 1(1521-R) 1(0075-P) 2(1222-PR) 1(0762-R) 4(1222-PR)
89	left to right	6(0762-R) 1(1222-PR) 1(0075-P) 1(1521-R) 7(0762-R) 1(1222-PR) 1(0075-P) 1(1521-R) 1(0762-R)
90	right to left	1(0762-R) 1(1222-PR) 1(0075-P) 1(1521-R) 7(0762-R) 1(1222-PR) 1(0075-P) 1(1521-R) 6(0762-R)
91	left to right	1(0762-R) 3(1262-R) 2(0762-R) 1(1222-PR) 2(1521-R) 2(0762-R) 3(1262-R) 2(0762-R) 1(1222-PR) 2(1521-R) 1(0762-R)
92	right to left	1(0762-R) 1(1222-PR) 2(1521-R) 2(0762-R) 3(1262-R) 2(0762-R) 1(1222-PR) 2(1521-R) 2(0762-R) 3(1262-R) 1(0762-R)
93	left to right	1(0762-R) 1(0075-P) 1(1109-R) 1(0075-P) 1(1262-R) 2(0762-R) 1(1521-R) 1(1222-PR) 2(0762-R) 1(0075-P) 1(1109-R) 1(0075-P) 1(1262-R) 2(0762-R) 1(1521-R) 1(1222-PR) 1(0762-R)
94	right to left	2(0762-R) 1(1521-R) 1(1222-PR) 2(0762-R) 1(0075-P) 1(1109-R) 1(0075-P) 1(1262-R) 2(0762-R) 1(1521-R) 1(1222-PR) 2(0762-R) 1(0075-P) 1(1109-R) 1(0075-P) 1(1262-R)
95	left to right	1(0762-R) 1(0075-P) 2(1109-R) 1(1262-R) 2(0762-R) 2(1222-PR) 2(0762-R) 1(0075-P) 2(1109-R) 1(1262-R) 2(0762-R) 2(1222-PR) 1(0762-R)
96	right to left	2(0762-R) 2(1222-PR) 2(0762-R) 1(0075-P) 2(1109-R) 1(1262-R) 2(0762-R) 2(1222-PR) 2(0762-R) 1(0075-P) 2(1109-R) 1(1262-R)
97	left to right	1(0762-R) 1(0075-P) 1(1521-R) 1(1109-R) 1(1262-R) 2(0762-R) 1(1222-PR) 3(0762-R) 1(0075-P) 1(1521-R) 1(1109-R) 1(1262-R) 2(0762-R) 1(1222-PR) 2(0762-R)
98	right to left	2(0762-R) 1(1222-PR) 3(0762-R) 1(0075-P) 1(1521-R) 1(1109-R) 1(1262-R) 2(0762-R) 1(1222-PR) 3(0762-R) 1(0075-P) 1(1521-R) 1(1109-R) 1(1262-R)
99	left to right	1(0762-R) 1(0075-P) 1(1109-R) 1(0075-P) 1(1262-R) 2(0762-R) 1(1521-R) 1(1222-PR) 2(0762-R) 1(0075-P) 1(1109-R) 1(0075-P) 1(1262-R) 2(0762-R) 1(1521-R) 1(1222-PR) 1(0762-R)
100	right to left	2(0762-R) 1(1521-R) 1(1222-PR) 2(0762-R) 1(0075-P) 1(1109-R) 1(0075-P) 1(1262-R) 2(0762-R) 1(1521-R) 1(1222-PR) 2(0762-R) 1(0075-P) 1(1109-R) 1(0075-P) 1(1262-R)
101	left to right	1(0762-R) 1(1262-R) 1(1109-R) 2(1262-R) 2(0762-R) 1(1521-R) 1(1222-PR) 2(0762-R) 1(1262-R) 1(1109-R) 2(1262-R) 2(0762-R) 1(1521-R) 1(1222-PR) 1(0762-R)
102	right to left	2(0762-R) 1(1521-R) 1(1222-PR) 2(0762-R) 1(1262-R) 1(1109-R) 2(1262-R) 2(0762-R) 1(1521-R) 1(1222-PR) 2(0762-R) 1(1262-R) 1(1109-R) 2(1262-R)
103	left to right	2(0762-R) 1(1262-R) 3(0762-R) 1(1222-PR) 1(0075-P) 1(1521-R) 3(0762-R) 1(1262-R) 3(0762-R) 1(1222-PR) 1(0075-P) 1(1521-R) 1(0762-R)
104	right to left	1(0762-R) 1(1222-PR) 1(0075-P) 1(1521-R) 3(0762-R) 1(1262-R) 3(0762-R) 1(1222-PR) 1(0075-P) 1(1521-R) 3(0762-R) 1(1262-R) 2(0762-R)

## FIESTA 2 DROP PEYOTE

*2-Peyote word chart(original): rows left to right reverse as mfg name*

Row	Direction	Word Chart
105	left to right	1(0762-R) 1(1222-PR) 1(0762-R) 1(1222-PR) 2(0762-R) 1(1222-PR) 1(0075-P) 1(1521-R) 1(1222-PR) 1(0762-R) 1(1222-PR) 1(0762-R) 1(1222-PR) 2(0762-R) 1(1222-PR) 1(0075-P) 1(1521-R) 1(1222-PR)
106	right to left	1(0762-R) 1(1222-PR) 1(0075-P) 1(1521-R) 1(1222-PR) 1(0762-R) 1(1222-PR) 1(0762-R) 1(1222-PR) 2(0762-R) 1(1222-PR) 1(0075-P) 1(1521-R) 1(1222-PR) 1(0762-R) 1(1222-PR) 1(0762-R) 1(1222-PR) 1(0762-R)
107	left to right	1(0762-R) 1(1521-R) 1(1222-PR) 1(1521-R) 1(1222-PR) 1(0762-R) 1(1521-R) 3(1222-PR) 1(0762-R) 1(1521-R) 1(1222-PR) 1(1521-R) 1(1222-PR) 1(0762-R) 1(1521-R) 3(1222-PR)
108	right to left	1(0762-R) 1(1521-R) 3(1222-PR) 1(0762-R) 1(1521-R) 1(1222-PR) 1(1521-R) 1(1222-PR) 1(0762-R) 1(1521-R) 3(1222-PR) 1(0762-R) 1(1521-R) 1(1222-PR) 1(1521-R) 1(1222-PR)
109	left to right	1(0762-R) 1(1521-R) 3(1222-PR) 1(0762-R) 1(1521-R) 1(1222-PR) 1(1521-R) 1(1222-PR) 1(0762-R) 1(1521-R) 3(1222-PR) 1(0762-R) 1(1521-R) 1(1222-PR) 1(1521-R) 1(1222-PR)
110	right to left	1(0762-R) 1(1521-R) 1(1222-PR) 1(1521-R) 1(1222-PR) 1(0762-R) 1(1521-R) 3(1222-PR) 1(0762-R) 1(1521-R) 1(1222-PR) 1(1521-R) 1(1222-PR) 1(0762-R) 1(1521-R) 3(1222-PR)
111	left to right	1(0762-R) 1(1222-PR) 1(0075-P) 1(1521-R) 1(1222-PR) 1(0762-R) 1(1222-PR) 1(0762-R) 1(1222-PR) 2(0762-R) 1(1222-PR) 1(0075-P) 1(1521-R) 1(1222-PR) 1(0762-R) 1(1222-PR) 1(0762-R) 1(1222-PR) 1(0762-R)
112	right to left	1(0762-R) 1(1222-PR) 1(0762-R) 1(1222-PR) 2(0762-R) 1(1222-PR) 1(0075-P) 1(1521-R) 1(1222-PR) 1(0762-R) 1(1222-PR) 1(0762-R) 1(1222-PR) 2(0762-R) 1(1222-PR) 1(0075-P) 1(1521-R) 1(1222-PR)
113	left to right	1(0762-R) 1(1222-PR) 1(0075-P) 1(1521-R) 3(0762-R) 1(1262-R) 3(0762-R) 1(1222-PR) 1(0075-P) 1(1521-R) 3(0762-R) 1(1262-R) 2(0762-R)
114	right to left	2(0762-R) 1(1262-R) 3(0762-R) 1(1222-PR) 1(0075-P) 1(1521-R) 3(0762-R) 1(1262-R) 3(0762-R) 1(1222-PR) 1(0075-P) 1(1521-R) 1(0762-R)
115	left to right	2(0762-R) 1(1521-R) 1(1222-PR) 2(0762-R) 1(1262-R) 1(1109-R) 2(1262-R) 2(0762-R) 1(1521-R) 1(1222-PR) 2(0762-R) 1(1262-R) 1(1109-R) 2(1262-R)
116	right to left	1(0762-R) 1(1262-R) 1(1109-R) 2(1262-R) 2(0762-R) 1(1521-R) 1(1222-PR) 2(0762-R) 1(1262-R) 1(1109-R) 2(1262-R) 2(0762-R) 1(1521-R) 1(1222-PR) 1(0762-R)
117	left to right	2(0762-R) 1(1521-R) 1(1222-PR) 2(0762-R) 1(0075-P) 1(1109-R) 1(0075-P) 1(1262-R) 2(0762-R) 1(1521-R) 1(1222-PR) 2(0762-R) 1(0075-P) 1(1109-R) 1(0075-P) 1(1262-R)
118	right to left	1(0762-R) 1(0075-P) 1(1109-R) 1(0075-P) 1(1262-R) 2(0762-R) 1(1521-R) 1(1222-PR) 2(0762-R) 1(0075-P) 1(1109-R) 1(0075-P) 1(1262-R) 2(0762-R) 1(1521-R) 1(1222-PR) 1(0762-R)
119	left to right	2(0762-R) 1(1222-PR) 3(0762-R) 1(0075-P) 1(1521-R) 1(1109-R) 1(1262-R) 2(0762-R) 1(1222-PR) 3(0762-R) 1(0075-P) 1(1521-R) 1(1109-R) 1(1262-R)
120	right to left	1(0762-R) 1(0075-P) 1(1521-R) 1(1109-R) 1(1262-R) 2(0762-R) 1(1222-PR) 3(0762-R) 1(0075-P) 1(1521-R) 1(1109-R) 1(1262-R) 2(0762-R) 1(1222-PR) 2(0762-R)
121	left to right	2(0762-R) 2(1222-PR) 2(0762-R) 1(0075-P) 2(1109-R) 1(1262-R) 2(0762-R) 2(1222-PR) 2(0762-R) 1(0075-P) 2(1109-R) 1(1262-R)
122	right to left	1(0762-R) 1(0075-P) 2(1109-R) 1(1262-R) 2(0762-R) 2(1222-PR) 2(0762-R) 1(0075-P) 2(1109-R) 1(1262-R) 2(0762-R) 2(1222-PR) 1(0762-R)
123	left to right	2(0762-R) 1(1521-R) 1(1222-PR) 2(0762-R) 1(0075-P) 1(1109-R) 1(0075-P) 1(1262-R) 2(0762-R) 1(1521-R) 1(1222-PR) 2(0762-R) 1(0075-P) 1(1109-R) 1(0075-P) 1(1262-R)
124	right to left	1(0762-R) 1(0075-P) 1(1109-R) 1(0075-P) 1(1262-R) 2(0762-R) 1(1521-R) 1(1222-PR) 2(0762-R) 1(0075-P) 1(1109-R) 1(0075-P) 1(1262-R) 2(0762-R) 1(1521-R) 1(1222-PR) 1(0762-R)

## FIESTA 2 DROP PEYOTE

*2-Peyote word chart(original): rows left to right reverse as mfg name*

Row	Direction	Word Chart
125	left to right	1(0762-R) 1(1222-PR) 2(1521-R) 2(0762-R) 3(1262-R) 2(0762-R) 1(1222-PR) 2(1521-R) 2(0762-R) 3(1262-R) 1(0762-R)
126	right to left	1(0762-R) 3(1262-R) 2(0762-R) 1(1222-PR) 2(1521-R) 2(0762-R) 3(1262-R) 2(0762-R) 1(1222-PR) 2(1521-R) 1(0762-R)
127	left to right	1(0762-R) 1(1222-PR) 1(0075-P) 1(1521-R) 7(0762-R) 1(1222-PR) 1(0075-P) 1(1521-R) 6(0762-R)
128	right to left	6(0762-R) 1(1222-PR) 1(0075-P) 1(1521-R) 7(0762-R) 1(1222-PR) 1(0075-P) 1(1521-R) 1(0762-R)
129	left to right	1(0762-R) 1(1521-R) 1(0075-P) 2(1222-PR) 1(0762-R) 4(1222-PR) 1(0762-R) 1(1521-R) 1(0075-P) 2(1222-PR) 1(0762-R) 4(1222-PR)
130	right to left	1(0762-R) 4(1222-PR) 1(0762-R) 1(1521-R) 1(0075-P) 2(1222-PR) 1(0762-R) 4(1222-PR) 1(0762-R) 1(1521-R) 1(0075-P) 2(1222-PR)
131	left to right	1(0762-R) 1(1521-R) 1(1222-PR) 1(1521-R) 1(1222-PR) 1(0762-R) 1(1521-R) 1(1222-PR) 1(1521-R) 1(1222-PR) 1(0762-R) 1(1521-R) 1(1222-PR) 1(1521-R) 1(1222-PR)
132	right to left	1(0762-R) 1(1521-R) 1(1222-PR) 1(1521-R) 1(1222-PR) 1(0762-R) 1(1521-R) 1(1222-PR) 1(1521-R) 1(1222-PR) 1(0762-R) 1(1521-R) 1(1222-PR) 1(1521-R) 1(1222-PR)
133	left to right	1(0762-R) 4(1222-PR) 1(0762-R) 1(1521-R) 1(0075-P) 2(1222-PR) 1(0762-R) 4(1222-PR) 1(0762-R) 1(1521-R) 1(0075-P) 2(1222-PR)
134	right to left	1(0762-R) 1(1521-R) 1(0075-P) 2(1222-PR) 1(0762-R) 4(1222-PR) 1(0762-R) 1(1521-R) 1(0075-P) 2(1222-PR) 1(0762-R) 4(1222-PR)
135	left to right	6(0762-R) 1(1222-PR) 1(0075-P) 1(1521-R) 7(0762-R) 1(1222-PR) 1(0075-P) 1(1521-R) 1(0762-R)
136	right to left	1(0762-R) 1(1222-PR) 1(0075-P) 1(1521-R) 7(0762-R) 1(1222-PR) 1(0075-P) 1(1521-R) 6(0762-R)
137	left to right	1(0762-R) 3(1262-R) 2(0762-R) 1(1222-PR) 2(1521-R) 2(0762-R) 3(1262-R) 2(0762-R) 1(1222-PR) 2(1521-R) 1(0762-R)
138	right to left	1(0762-R) 1(1222-PR) 2(1521-R) 2(0762-R) 3(1262-R) 2(0762-R) 1(1222-PR) 2(1521-R) 2(0762-R) 3(1262-R) 1(0762-R)
139	left to right	1(0762-R) 1(0075-P) 1(1109-R) 1(0075-P) 1(1262-R) 2(0762-R) 1(1521-R) 1(1222-PR) 2(0762-R) 1(0075-P) 1(1109-R) 1(0075-P) 1(1262-R) 2(0762-R) 1(1521-R) 1(1222-PR) 1(0762-R)
140	right to left	2(0762-R) 1(1521-R) 1(1222-PR) 2(0762-R) 1(0075-P) 1(1109-R) 1(0075-P) 1(1262-R) 2(0762-R) 1(1521-R) 1(1222-PR) 2(0762-R) 1(0075-P) 1(1109-R) 1(0075-P) 1(1262-R)
141	left to right	1(0762-R) 1(0075-P) 2(1109-R) 1(1262-R) 2(0762-R) 2(1222-PR) 2(0762-R) 1(0075-P) 2(1109-R) 1(1262-R) 2(0762-R) 2(1222-PR) 1(0762-R)
142	right to left	2(0762-R) 2(1222-PR) 2(0762-R) 1(0075-P) 2(1109-R) 1(1262-R) 2(0762-R) 2(1222-PR) 2(0762-R) 1(0075-P) 2(1109-R) 1(1262-R)
143	left to right	1(0762-R) 1(0075-P) 1(1521-R) 1(1109-R) 1(1262-R) 2(0762-R) 1(1222-PR) 3(0762-R) 1(0075-P) 1(1521-R) 1(1109-R) 1(1262-R) 2(0762-R) 1(1222-PR) 2(0762-R)
144	right to left	2(0762-R) 1(1222-PR) 3(0762-R) 1(0075-P) 1(1521-R) 1(1109-R) 1(1262-R) 2(0762-R) 1(1222-PR) 3(0762-R) 1(0075-P) 1(1521-R) 1(1109-R) 1(1262-R)
145	left to right	1(0762-R) 1(0075-P) 1(1109-R) 1(0075-P) 1(1262-R) 2(0762-R) 1(1521-R) 1(1222-PR) 2(0762-R) 1(0075-P) 1(1109-R) 1(0075-P) 1(1262-R) 2(0762-R) 1(1521-R) 1(1222-PR) 1(0762-R)

## FIESTA 2 DROP PEYOTE

*2-Peyote word chart(original): rows left to right reverse as mfg name*

Row	Direction	Word Chart
146	right to left	2(0762-R) 1(1521-R) 1(1222-PR) 2(0762-R) 1(0075-P) 1(1109-R) 1(0075-P) 1(1262-R) 2(0762-R) 1(1521-R) 1(1222-PR) 2(0762-R) 1(0075-P) 1(1109-R) 1(0075-P) 1(1262-R)
147	left to right	1(0762-R) 1(1262-R) 1(1109-R) 2(1262-R) 2(0762-R) 1(1521-R) 1(1222-PR) 2(0762-R) 1(1262-R) 1(1109-R) 2(1262-R) 2(0762-R) 1(1521-R) 1(1222-PR) 1(0762-R)
148	right to left	2(0762-R) 1(1521-R) 1(1222-PR) 2(0762-R) 1(1262-R) 1(1109-R) 2(1262-R) 2(0762-R) 1(1521-R) 1(1222-PR) 2(0762-R) 1(1262-R) 1(1109-R) 2(1262-R)
149	left to right	2(0762-R) 1(1262-R) 3(0762-R) 1(1222-PR) 1(0075-P) 1(1521-R) 3(0762-R) 1(1262-R) 3(0762-R) 1(1222-PR) 1(0075-P) 1(1521-R) 1(0762-R)
150	right to left	1(0762-R) 1(1222-PR) 1(0075-P) 1(1521-R) 3(0762-R) 1(1262-R) 3(0762-R) 1(1222-PR) 1(0075-P) 1(1521-R) 3(0762-R) 1(1262-R) 2(0762-R)
151	left to right	1(0762-R) 1(1222-PR) 1(0762-R) 1(1222-PR) 2(0762-R) 1(1222-PR) 1(0075-P) 1(1521-R) 1(1222-PR) 1(0762-R) 1(1222-PR) 1(0762-R) 1(1222-PR) 2(0762-R) 1(1222-PR) 1(0075-P) 1(1521-R) 1(1222-PR)
152	right to left	1(0762-R) 1(1222-PR) 1(0075-P) 1(1521-R) 1(1222-PR) 1(0762-R) 1(1222-PR) 1(0762-R) 1(1222-PR) 2(0762-R) 1(1222-PR) 1(0075-P) 1(1521-R) 1(1222-PR) 1(0762-R) 1(1222-PR) 1(0762-R) 1(1222-PR) 1(0762-R)
153	left to right	1(0762-R) 1(1521-R) 1(1222-PR) 1(1521-R) 1(1222-PR) 1(0762-R) 1(1521-R) 3(1222-PR) 1(0762-R) 1(1521-R) 1(1222-PR) 1(1521-R) 1(1222-PR) 1(0762-R) 1(1521-R) 3(1222-PR)
154	right to left	1(0762-R) 1(1521-R) 3(1222-PR) 1(0762-R) 1(1521-R) 1(1222-PR) 1(1521-R) 1(1222-PR) 1(0762-R) 1(1521-R) 3(1222-PR) 1(0762-R) 1(1521-R) 1(1222-PR) 1(1521-R) 1(1222-PR)
155	left to right	1(0762-R) 1(1521-R) 3(1222-PR) 1(0762-R) 1(1521-R) 1(1222-PR) 1(1521-R) 1(1222-PR) 1(0762-R) 1(1521-R) 3(1222-PR) 1(0762-R) 1(1521-R) 1(1222-PR) 1(1521-R) 1(1222-PR)
156	right to left	1(0762-R) 1(1521-R) 1(1222-PR) 1(1521-R) 1(1222-PR) 1(0762-R) 1(1521-R) 3(1222-PR) 1(0762-R) 1(1521-R) 1(1222-PR) 1(1521-R) 1(1222-PR) 1(0762-R) 1(1521-R) 3(1222-PR)
157	left to right	1(0762-R) 1(1222-PR) 1(0075-P) 1(1521-R) 1(1222-PR) 1(0762-R) 1(1222-PR) 1(0762-R) 1(1222-PR) 2(0762-R) 1(1222-PR) 1(0075-P) 1(1521-R) 1(1222-PR) 1(0762-R) 1(1222-PR) 1(0762-R) 1(1222-PR) 1(0762-R)
158	right to left	1(0762-R) 1(1222-PR) 1(0762-R) 1(1222-PR) 2(0762-R) 1(1222-PR) 1(0075-P) 1(1521-R) 1(1222-PR) 1(0762-R) 1(1222-PR) 1(0762-R) 1(1222-PR) 2(0762-R) 1(1222-PR) 1(0075-P) 1(1521-R) 1(1222-PR)
159	left to right	1(0762-R) 1(1222-PR) 1(0075-P) 1(1521-R) 3(0762-R) 1(1262-R) 3(0762-R) 1(1222-PR) 1(0075-P) 1(1521-R) 3(0762-R) 1(1262-R) 2(0762-R)
160	right to left	2(0762-R) 1(1262-R) 3(0762-R) 1(1222-PR) 1(0075-P) 1(1521-R) 3(0762-R) 1(1262-R) 3(0762-R) 1(1222-PR) 1(0075-P) 1(1521-R) 1(0762-R)
161	left to right	2(0762-R) 1(1521-R) 1(1222-PR) 2(0762-R) 1(1262-R) 1(1109-R) 2(1262-R) 2(0762-R) 1(1521-R) 1(1222-PR) 2(0762-R) 1(1262-R) 1(1109-R) 2(1262-R)
162	right to left	1(0762-R) 1(1262-R) 1(1109-R) 2(1262-R) 2(0762-R) 1(1521-R) 1(1222-PR) 2(0762-R) 1(1262-R) 1(1109-R) 2(1262-R) 2(0762-R) 1(1521-R) 1(1222-PR) 1(0762-R)
163	left to right	2(0762-R) 1(1521-R) 1(1222-PR) 2(0762-R) 1(0075-P) 1(1109-R) 1(0075-P) 1(1262-R) 2(0762-R) 1(1521-R) 1(1222-PR) 2(0762-R) 1(1521-R) 1(1222-PR) 2(0762-R) 1(0075-P) 1(1109-R) 1(0075-P) 1(1262-R)
164	right to left	1(0762-R) 1(0075-P) 1(1109-R) 1(0075-P) 1(1262-R) 2(0762-R) 1(1521-R) 1(1222-PR) 2(0762-R) 1(0075-P) 1(1109-R) 1(0075-P) 1(1262-R) 2(0762-R) 1(1521-R) 1(1222-PR) 1(0762-R)
165	left to right	2(0762-R) 1(1222-PR) 3(0762-R) 1(0075-P) 1(1521-R) 1(1109-R) 1(1262-R) 2(0762-R) 1(1222-PR) 3(0762-R) 1(0075-P) 1(1521-R) 1(1109-R) 1(1262-R)

## FIESTA 2 DROP PEYOTE

*2-Peyote word chart(original): rows left to right reverse as mfg name*

Row	Direction	Word Chart
166	right to left	1(0762-R) 1(0075-P) 1(1521-R) 1(1109-R) 1(1262-R) 2(0762-R) 1(1222-PR) 3(0762-R) 1(0075-P) 1(1521-R) 1(1109-R) 1(1262-R) 2(0762-R) 1(1222-PR) 2(0762-R)
167	left to right	2(0762-R) 2(1222-PR) 2(0762-R) 1(0075-P) 2(1109-R) 1(1262-R) 2(0762-R) 2(1222-PR) 2(0762-R) 1(0075-P) 2(1109-R) 1(1262-R)
168	right to left	1(0762-R) 1(0075-P) 2(1109-R) 1(1262-R) 2(0762-R) 2(1222-PR) 2(0762-R) 1(0075-P) 2(1109-R) 1(1262-R) 2(0762-R) 2(1222-PR) 1(0762-R)
169	left to right	2(0762-R) 1(1521-R) 1(1222-PR) 2(0762-R) 1(0075-P) 1(1109-R) 1(0075-P) 1(1262-R) 2(0762-R) 1(1521-R) 1(1222-PR) 2(0762-R) 1(0075-P) 1(1109-R) 1(0075-P) 1(1262-R)
170	right to left	1(0762-R) 1(0075-P) 1(1109-R) 1(0075-P) 1(1262-R) 2(0762-R) 1(1521-R) 1(1222-PR) 2(0762-R) 1(0075-P) 1(1109-R) 1(0075-P) 1(1262-R) 2(0762-R) 1(1521-R) 1(1222-PR) 1(0762-R)
171	left to right	1(0762-R) 1(1222-PR) 2(1521-R) 2(0762-R) 3(1262-R) 2(0762-R) 1(1222-PR) 2(1521-R) 2(0762-R) 3(1262-R) 1(0762-R)
172	right to left	1(0762-R) 3(1262-R) 2(0762-R) 1(1222-PR) 2(1521-R) 2(0762-R) 3(1262-R) 2(0762-R) 1(1222-PR) 2(1521-R) 1(0762-R)
173	left to right	1(0762-R) 1(1222-PR) 1(0075-P) 1(1521-R) 7(0762-R) 1(1222-PR) 1(0075-P) 1(1521-R) 6(0762-R)
174	right to left	6(0762-R) 1(1222-PR) 1(0075-P) 1(1521-R) 7(0762-R) 1(1222-PR) 1(0075-P) 1(1521-R) 1(0762-R)
175	left to right	1(0762-R) 1(1521-R) 1(0075-P) 2(1222-PR) 1(0762-R) 4(1222-PR) 1(0762-R) 1(1521-R) 1(0075-P) 2(1222-PR) 1(0762-R) 4(1222-PR)
176	right to left	1(0762-R) 4(1222-PR) 1(0762-R) 1(1521-R) 1(0075-P) 2(1222-PR) 1(0762-R) 4(1222-PR) 1(0762-R) 1(1521-R) 1(0075-P) 2(1222-PR)
177	left to right	1(0762-R) 1(1521-R) 1(1222-PR) 1(1521-R) 1(1222-PR) 1(0762-R) 1(1521-R) 1(1222-PR) 1(1521-R) 1(1222-PR) 1(0762-R) 1(1521-R) 1(1222-PR) 1(1521-R) 1(1222-PR)
178	right to left	1(0762-R) 1(1521-R) 1(1222-PR) 1(1521-R) 1(1222-PR) 1(0762-R) 1(1521-R) 1(1222-PR) 1(1521-R) 1(1222-PR) 1(0762-R) 1(1521-R) 1(1222-PR) 1(1521-R) 1(1222-PR)
179	left to right	1(0762-R) 4(1222-PR) 1(0762-R) 1(1521-R) 1(0075-P) 2(1222-PR) 1(0762-R) 4(1222-PR) 1(0762-R) 1(1521-R) 1(0075-P) 2(1222-PR)
180	right to left	1(0762-R) 1(1521-R) 1(0075-P) 2(1222-PR) 1(0762-R) 4(1222-PR) 1(0762-R) 1(1521-R) 1(0075-P) 2(1222-PR) 1(0762-R) 4(1222-PR)
181	left to right	6(0762-R) 1(1222-PR) 1(0075-P) 1(1521-R) 7(0762-R) 1(1222-PR) 1(0075-P) 1(1521-R) 1(0762-R)
182	right to left	1(0762-R) 1(1222-PR) 1(0075-P) 1(1521-R) 7(0762-R) 1(1222-PR) 1(0075-P) 1(1521-R) 6(0762-R)
183	left to right	1(0762-R) 3(1262-R) 2(0762-R) 1(1222-PR) 2(1521-R) 2(0762-R) 3(1262-R) 2(0762-R) 1(1222-PR) 2(1521-R) 1(0762-R)
184	right to left	1(0762-R) 1(1222-PR) 2(1521-R) 2(0762-R) 3(1262-R) 2(0762-R) 1(1222-PR) 2(1521-R) 2(0762-R) 3(1262-R) 1(0762-R)
185	left to right	1(0762-R) 1(0075-P) 1(1109-R) 1(0075-P) 1(1262-R) 2(0762-R) 1(1521-R) 1(1222-PR) 2(0762-R) 1(0075-P) 1(1109-R) 1(0075-P) 1(1262-R) 2(0762-R) 1(1521-R) 1(1222-PR) 1(0762-R)
186	right to left	2(0762-R) 1(1521-R) 1(1222-PR) 2(0762-R) 1(0075-P) 1(1109-R) 1(0075-P) 1(1262-R) 2(0762-R) 1(1521-R) 1(1222-PR) 2(0762-R) 1(0075-P) 1(1109-R) 1(0075-P) 1(1262-R)

## FIESTA 2 DROP PEYOTE

*2-Peyote word chart(original): rows left to right reverse as mfg name*

Row	Direction	Word Chart
187	left to right	1(0762-R) 1(0075-P) 2(1109-R) 1(1262-R) 2(0762-R) 2(1222-PR) 2(0762-R) 1(0075-P) 2(1109-R) 1(1262-R) 2(0762-R) 2(1222-PR) 1(0762-R)
188	right to left	2(0762-R) 2(1222-PR) 2(0762-R) 1(0075-P) 2(1109-R) 1(1262-R) 2(0762-R) 2(1222-PR) 2(0762-R) 1(0075-P) 2(1109-R) 1(1262-R)
189	left to right	1(0762-R) 1(0075-P) 1(1521-R) 1(1109-R) 1(1262-R) 2(0762-R) 1(1222-PR) 3(0762-R) 1(0075-P) 1(1521-R) 1(1109-R) 1(1262-R) 2(0762-R) 1(1222-PR) 2(0762-R)
190	right to left	2(0762-R) 1(1222-PR) 3(0762-R) 1(0075-P) 1(1521-R) 1(1109-R) 1(1262-R) 2(0762-R) 1(1222-PR) 3(0762-R) 1(0075-P) 1(1521-R) 1(1109-R) 1(1262-R)
191	left to right	1(0762-R) 1(0075-P) 1(1109-R) 1(0075-P) 1(1262-R) 2(0762-R) 1(1521-R) 1(1222-PR) 2(0762-R) 1(0075-P) 1(1109-R) 1(0075-P) 1(1262-R) 2(0762-R) 1(1521-R) 1(1222-PR) 1(0762-R)
192	right to left	2(0762-R) 1(1521-R) 1(1222-PR) 2(0762-R) 1(0075-P) 1(1109-R) 1(0075-P) 1(1262-R) 2(0762-R) 1(1521-R) 1(1222-PR) 2(0762-R) 1(0075-P) 1(1109-R) 1(0075-P) 1(1262-R)
193	left to right	1(0762-R) 1(1262-R) 1(1109-R) 2(1262-R) 2(0762-R) 1(1521-R) 1(1222-PR) 2(0762-R) 1(1262-R) 1(1109-R) 2(1262-R) 2(0762-R) 1(1521-R) 1(1222-PR) 1(0762-R)
194	right to left	2(0762-R) 1(1521-R) 1(1222-PR) 2(0762-R) 1(1262-R) 1(1109-R) 2(1262-R) 2(0762-R) 1(1521-R) 1(1222-PR) 2(0762-R) 1(1262-R) 1(1109-R) 2(1262-R)
195	left to right	2(0762-R) 1(1262-R) 3(0762-R) 1(1222-PR) 1(0075-P) 1(1521-R) 3(0762-R) 1(1262-R) 3(0762-R) 1(1222-PR) 1(0075-P) 1(1521-R) 1(0762-R)
196	right to left	1(0762-R) 1(1222-PR) 1(0075-P) 1(1521-R) 3(0762-R) 1(1262-R) 3(0762-R) 1(1222-PR) 1(0075-P) 1(1521-R) 3(0762-R) 1(1262-R) 2(0762-R)
197	left to right	1(0762-R) 1(1222-PR) 1(0762-R) 1(1222-PR) 2(0762-R) 1(1222-PR) 1(0075-P) 1(1521-R) 1(1222-PR) 1(0762-R) 1(1222-PR) 1(0762-R) 1(1222-PR) 2(0762-R) 1(1222-PR) 1(0075-P) 1(1521-R) 1(1222-PR)
198	right to left	1(0762-R) 1(1222-PR) 1(0075-P) 1(1521-R) 1(1222-PR) 1(0762-R) 1(1222-PR) 1(0762-R) 1(1222-PR) 2(0762-R) 1(1222-PR) 1(0075-P) 1(1521-R) 1(1222-PR) 1(0762-R) 1(1222-PR) 1(0762-R) 1(1222-PR) 1(0762-R)
199	left to right	1(0762-R) 1(1521-R) 1(1222-PR) 1(1521-R) 1(1222-PR) 1(0762-R) 1(1521-R) 3(1222-PR) 1(0762-R) 1(1521-R) 1(1222-PR) 1(1521-R) 1(1222-PR) 1(0762-R) 1(1521-R) 3(1222-PR)
200	right to left	1(0762-R) 1(1521-R) 3(1222-PR) 1(0762-R) 1(1521-R) 1(1222-PR) 1(1521-R) 1(1222-PR) 1(0762-R) 1(1521-R) 3(1222-PR) 1(0762-R) 1(1521-R) 1(1222-PR) 1(1521-R) 1(1222-PR)
201	left to right	1(0762-R) 1(1521-R) 3(1222-PR) 1(0762-R) 1(1521-R) 1(1222-PR) 1(1521-R) 1(1222-PR) 1(0762-R) 1(1521-R) 3(1222-PR) 1(0762-R) 1(1521-R) 1(1222-PR) 1(1521-R) 1(1222-PR)
202	right to left	1(0762-R) 1(1521-R) 1(1222-PR) 1(1521-R) 1(1222-PR) 1(0762-R) 1(1521-R) 3(1222-PR) 1(0762-R) 1(1521-R) 1(1222-PR) 1(1521-R) 1(1222-PR) 1(0762-R) 1(1521-R) 3(1222-PR)
203	left to right	1(0762-R) 1(1222-PR) 1(0075-P) 1(1521-R) 1(1222-PR) 1(0762-R) 1(1222-PR) 1(0762-R) 1(1222-PR) 2(0762-R) 1(1222-PR) 1(0075-P) 1(1521-R) 1(1222-PR) 1(0762-R) 1(1222-PR) 1(0762-R) 1(1222-PR) 1(0762-R)
204	right to left	1(0762-R) 1(1222-PR) 1(0762-R) 1(1222-PR) 2(0762-R) 1(1222-PR) 1(0075-P) 1(1521-R) 1(1222-PR) 1(0762-R) 1(1222-PR) 1(0762-R) 1(1222-PR) 2(0762-R) 1(1222-PR) 1(0075-P) 1(1521-R) 1(1222-PR)
205	left to right	1(0762-R) 1(1222-PR) 1(0075-P) 1(1521-R) 3(0762-R) 1(1262-R) 3(0762-R) 1(1222-PR) 1(0075-P) 1(1521-R) 3(0762-R) 1(1262-R) 2(0762-R)
206	right to left	2(0762-R) 1(1262-R) 3(0762-R) 1(1222-PR) 1(0075-P) 1(1521-R) 3(0762-R) 1(1262-R) 3(0762-R) 1(1222-PR) 1(0075-P) 1(1521-R) 1(0762-R)

## FIESTA 2 DROP PEYOTE

*2-Peyote word chart(original): rows left to right reverse as mfg name*

Row	Direction	Word Chart
207	left to right	2(0762-R) 1(1521-R) 1(1222-PR) 2(0762-R) 1(1262-R) 1(1109-R) 2(1262-R) 2(0762-R) 1(1521-R) 1(1222-PR) 2(0762-R) 1(1262-R) 1(1109-R) 2(1262-R)
208	right to left	1(0762-R) 1(1262-R) 1(1109-R) 2(1262-R) 2(0762-R) 1(1521-R) 1(1222-PR) 2(0762-R) 1(1262-R) 1(1109-R) 2(1262-R) 2(0762-R) 1(1521-R) 1(1222-PR) 1(0762-R)
209	left to right	2(0762-R) 1(1521-R) 1(1222-PR) 2(0762-R) 1(0075-P) 1(1109-R) 1(0075-P) 1(1262-R) 2(0762-R) 1(1521-R) 1(1222-PR) 2(0762-R) 1(0075-P) 1(1109-R) 1(0075-P) 1(1262-R)
210	right to left	1(0762-R) 1(0075-P) 1(1109-R) 1(0075-P) 1(1262-R) 2(0762-R) 1(1521-R) 1(1222-PR) 2(0762-R) 1(0075-P) 1(1109-R) 1(0075-P) 1(1262-R) 2(0762-R) 1(1521-R) 1(1222-PR) 1(0762-R)
211	left to right	2(0762-R) 1(1222-PR) 3(0762-R) 1(0075-P) 1(1521-R) 1(1109-R) 1(1262-R) 2(0762-R) 1(1222-PR) 3(0762-R) 1(0075-P) 1(1521-R) 1(1109-R) 1(1262-R)
212	right to left	1(0762-R) 1(0075-P) 1(1521-R) 1(1109-R) 1(1262-R) 2(0762-R) 1(1222-PR) 3(0762-R) 1(0075-P) 1(1521-R) 1(1109-R) 1(1262-R) 2(0762-R) 1(1222-PR) 2(0762-R)
213	left to right	2(0762-R) 2(1222-PR) 2(0762-R) 1(0075-P) 2(1109-R) 1(1262-R) 2(0762-R) 2(1222-PR) 2(0762-R) 1(0075-P) 2(1109-R) 1(1262-R)
214	right to left	1(0762-R) 1(0075-P) 2(1109-R) 1(1262-R) 2(0762-R) 2(1222-PR) 2(0762-R) 1(0075-P) 2(1109-R) 1(1262-R) 2(0762-R) 2(1222-PR) 1(0762-R)
215	left to right	2(0762-R) 1(1521-R) 1(1222-PR) 2(0762-R) 1(0075-P) 1(1109-R) 1(0075-P) 1(1262-R) 2(0762-R) 1(1521-R) 1(1222-PR) 2(0762-R) 1(0075-P) 1(1109-R) 1(0075-P) 1(1262-R)
216	right to left	1(0762-R) 1(0075-P) 1(1109-R) 1(0075-P) 1(1262-R) 2(0762-R) 1(1521-R) 1(1222-PR) 2(0762-R) 1(0075-P) 1(1109-R) 1(0075-P) 1(1262-R) 2(0762-R) 1(1521-R) 1(1222-PR) 1(0762-R)
217	left to right	1(0762-R) 1(1222-PR) 2(1521-R) 2(0762-R) 3(1262-R) 2(0762-R) 1(1222-PR) 2(1521-R) 2(0762-R) 3(1262-R) 1(0762-R)
218	right to left	1(0762-R) 3(1262-R) 2(0762-R) 1(1222-PR) 2(1521-R) 2(0762-R) 3(1262-R) 2(0762-R) 1(1222-PR) 2(1521-R) 1(0762-R)
219	left to right	1(0762-R) 1(1222-PR) 1(0075-P) 1(1521-R) 7(0762-R) 1(1222-PR) 1(0075-P) 1(1521-R) 6(0762-R)
220	right to left	6(0762-R) 1(1222-PR) 1(0075-P) 1(1521-R) 7(0762-R) 1(1222-PR) 1(0075-P) 1(1521-R) 1(0762-R)
221	left to right	1(0762-R) 1(1521-R) 1(0075-P) 2(1222-PR) 1(0762-R) 4(1222-PR) 1(0762-R) 1(1521-R) 1(0075-P) 2(1222-PR) 1(0762-R) 4(1222-PR)
222	right to left	1(0762-R) 4(1222-PR) 1(0762-R) 1(1521-R) 1(0075-P) 2(1222-PR) 1(0762-R) 4(1222-PR) 1(0762-R) 1(1521-R) 1(0075-P) 2(1222-PR)
223	left to right	1(0762-R) 1(1521-R) 1(1222-PR) 1(1521-R) 1(1222-PR) 1(0762-R) 1(1521-R) 1(1222-PR) 1(1521-R) 1(1222-PR) 1(0762-R) 1(1521-R) 1(1222-PR) 1(1521-R) 1(1222-PR)
224	right to left	1(0762-R) 1(1521-R) 1(1222-PR) 1(1521-R) 1(1222-PR) 1(0762-R) 1(1521-R) 1(1222-PR) 1(1521-R) 1(1222-PR) 1(0762-R) 1(1521-R) 1(1222-PR) 1(1521-R) 1(1222-PR)
225	left to right	1(0762-R) 4(1222-PR) 1(0762-R) 1(1521-R) 1(0075-P) 2(1222-PR) 1(0762-R) 4(1222-PR) 1(0762-R) 1(1521-R) 1(0075-P) 2(1222-PR)
226	right to left	1(0762-R) 1(1521-R) 1(0075-P) 2(1222-PR) 1(0762-R) 4(1222-PR) 1(0762-R) 1(1521-R) 1(0075-P) 2(1222-PR) 1(0762-R) 4(1222-PR)
227	left to right	6(0762-R) 1(1222-PR) 1(0075-P) 1(1521-R) 7(0762-R) 1(1222-PR) 1(0075-P) 1(1521-R) 1(0762-R)

## FIESTA 2 DROP PEYOTE

*2-Peyote word chart(original): rows left to right reverse as mfg name*

Row	Direction	Word Chart
228	right to left	1(0762-R) 1(1222-PR) 1(0075-P) 1(1521-R) 7(0762-R) 1(1222-PR) 1(0075-P) 1(1521-R) 6(0762-R)
229	left to right	1(0762-R) 3(1262-R) 2(0762-R) 1(1222-PR) 2(1521-R) 2(0762-R) 3(1262-R) 2(0762-R) 1(1222-PR) 2(1521-R) 1(0762-R)
230	right to left	1(0762-R) 1(1222-PR) 2(1521-R) 2(0762-R) 3(1262-R) 2(0762-R) 1(1222-PR) 2(1521-R) 2(0762-R) 3(1262-R) 1(0762-R)
231	left to right	1(0762-R) 1(0075-P) 1(1109-R) 1(0075-P) 1(1262-R) 2(0762-R) 1(1521-R) 1(1222-PR) 2(0762-R) 1(0075-P) 1(1109-R) 1(0075-P) 1(1262-R) 2(0762-R) 1(1521-R) 1(1222-PR) 1(0762-R)
232	right to left	2(0762-R) 1(1521-R) 1(1222-PR) 2(0762-R) 1(0075-P) 1(1109-R) 1(0075-P) 1(1262-R) 2(0762-R) 1(1521-R) 1(1222-PR) 2(0762-R) 1(0075-P) 1(1109-R) 1(0075-P) 1(1262-R)
233	left to right	1(0762-R) 1(0075-P) 2(1109-R) 1(1262-R) 2(0762-R) 2(1222-PR) 2(0762-R) 1(0075-P) 2(1109-R) 1(1262-R) 2(0762-R) 2(1222-PR) 1(0762-R)
234	right to left	2(0762-R) 2(1222-PR) 2(0762-R) 1(0075-P) 2(1109-R) 1(1262-R) 2(0762-R) 2(1222-PR) 2(0762-R) 1(0075-P) 2(1109-R) 1(1262-R)
235	left to right	1(0762-R) 1(0075-P) 1(1521-R) 1(1109-R) 1(1262-R) 2(0762-R) 1(1222-PR) 3(0762-R) 1(0075-P) 1(1521-R) 1(1109-R) 1(1262-R) 2(0762-R) 1(1222-PR) 2(0762-R)
236	right to left	2(0762-R) 1(1222-PR) 3(0762-R) 1(0075-P) 1(1521-R) 1(1109-R) 1(1262-R) 2(0762-R) 1(1222-PR) 3(0762-R) 1(0075-P) 1(1521-R) 1(1109-R) 1(1262-R)
237	left to right	1(0762-R) 1(0075-P) 1(1109-R) 1(0075-P) 1(1262-R) 2(0762-R) 1(1521-R) 1(1222-PR) 2(0762-R) 1(0075-P) 1(1109-R) 1(0075-P) 1(1262-R) 2(0762-R) 1(1521-R) 1(1222-PR) 1(0762-R)
238	right to left	2(0762-R) 1(1521-R) 1(1222-PR) 2(0762-R) 1(0075-P) 1(1109-R) 1(0075-P) 1(1262-R) 2(0762-R) 1(1521-R) 1(1222-PR) 2(0762-R) 1(0075-P) 1(1109-R) 1(0075-P) 1(1262-R)
239	left to right	1(0762-R) 1(1262-R) 1(1109-R) 2(1262-R) 2(0762-R) 1(1521-R) 1(1222-PR) 2(0762-R) 1(1262-R) 1(1109-R) 2(1262-R) 2(0762-R) 1(1521-R) 1(1222-PR) 1(0762-R)
240	right to left	2(0762-R) 1(1521-R) 1(1222-PR) 2(0762-R) 1(1262-R) 1(1109-R) 2(1262-R) 2(0762-R) 1(1521-R) 1(1222-PR) 2(0762-R) 1(1262-R) 1(1109-R) 2(1262-R)